



FOR WIRELESS THAT WORKS. EVERYWHERE.

AIRWAVE WIRELESS MANAGEMENT SUITE 5.0

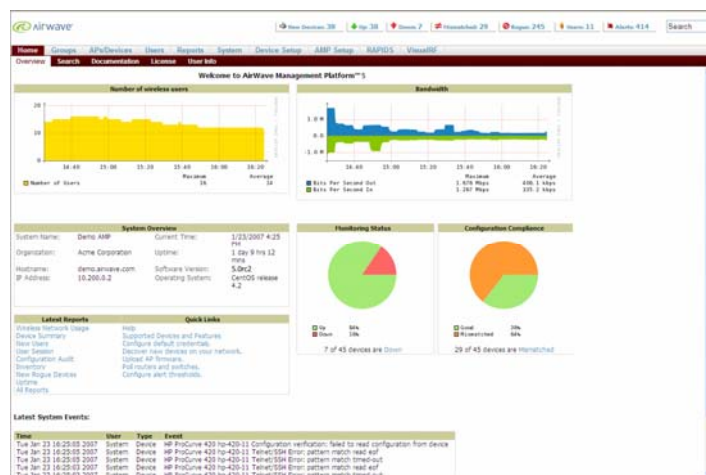
Managing the “Everywhere Network”

New wireless technologies now make it possible for service providers and enterprise IT to deliver wireless access everywhere – indoor and outdoors, in large warehouses and small remote offices. But this new “Everywhere Network” will often require multiple wireless technologies and literally thousands of infrastructure devices:

- WiFi access points to provide wall-to-wall coverage in buildings.
- Mesh products to extend the wireless network in buildings where it is impractical or too costly to pull cable – or even to blanket campuses and entire towns with outdoor wireless coverage.
- WiMax products enable affordable wireless broadband delivered over many miles.

The new AirWave Wireless Management Suite v5.0 software makes the Everywhere Network completely manageable – from a single console. The 5.0 release extends the market-leading capabilities of the AirWave software used by 400+ organizations today, delivering the critical functionality needed to monitor, configure and control the complex Everywhere Networks of tomorrow:

- **Flexibility** to manage the entire wireless network infrastructure – including WiFi, mesh, and WiMax products from multiple vendors – from a single console.
- **Scalability** to control even the largest wireless networks in the world with 25,000+ wireless access points and devices
- **True security** through the efficient, automated enforcement of policies across the entire network.
- **Usability** to help the Help Desk and other members of the IT staff identify, diagnose, and resolve wireless issues quickly.



AirWave 5.0 – What’s New!

- Support for mesh and WiMax products
- Expanded roster of supported WiFi products, including thin and autonomous access points from Cisco, Aruba, Motorola/Symbol, HP ProCurve, Proxim, Avaya, Colubris, LANCOM Systems, Enterasys, and many more.
- ‘Universal Device Support’ to monitor virtually any network device
- ‘3D Navigation’
- ‘AirWave Enterprise Edition’ (for managing up to 2,500 devices from a single server)
- AirWave Master Console™ enhancements
- Google Earth integration
- Custom Compliance Audit
- Enhanced user interface, with “Quick View” screens



NEW!

Flexibility to manage the entire wireless network from a single console.

Mesh Network Support	5.0 eliminates the need for separate management solutions for your mesh network and traditional WiFi devices. Supports indoor and outdoor mesh solutions from Cisco, Proxim, and Tropos – with additional vendors to be added.
WiMax Support	5.0 introduces support for Proxim’s WiMax product line, with additional support for licensed and unlicensed WiMax products to be announced.
Universal Device Support	“Universal Device Support” allows you to gather basic monitoring data from virtually any device via SNMP or ICMP – including many less commonly used brands of access points and controllers. UDS also permits you to monitor wired network infrastructure that has a direct impact on wireless network performance – so if users are reporting that they cannot connect wirelessly, you verify with a glance that the RADIUS server and upstream switches are up.
Expanded Brand Support	5.0 extends AirWave’s support for WiFi products to encompass new vendors and product lines, including those from Aruba, Avaya, Cisco (autonomous and LWAPP), Colubris, Enterasys, Intermec, Juniper, LANCOM, ProCurve (HP), Proxim, Symbol, 3Com and many others.

Thousands of APs. Hundreds of locations. Dozens of IT employees. One solution.

<i>AirWave Enterprise Edition</i>	5.0 introduces the AirWave Wireless Management Suite Enterprise Edition – a software product that supports up to 2,500 wireless devices from a single server in most environments. Multiple Enterprise servers can be connected to manage even larger networks.
<i>AirWave Master Console</i>	5.0 enhances the AirWave Master Console™ for seamless management of the largest wireless network environments in which multiple servers are deployed for maximum scalability. No matter how many servers are used, the Master Console provides a single web-based console for monitoring the network. 5.0 brings several critical enhancements to the Master Console, including several new reports and monitoring views.
<i>Custom Compliance Audit</i>	Automated configuration compliance audits are the only possible way to enforce policies across thousands of devices. Yet, with hundreds of configurable settings on most controllers or APs, IT can be overwhelmed with alerts related to insignificant variations in configuration from site to site. 5.0 allows you to specify which critical (security-related) configuration settings should generate high-priority alerts when variances are detected – and avoids ‘false positives’ from settings that can safely be allowed to vary.
<i>3-D Navigation</i>	5.0 makes it fast and easy for the Help Desk staff to call up location maps, RF heatmaps, and other critical information – simply by clicking on the icon for the particular building, campus, and floor they want to see.
<i>“QuickView”</i>	5.0’s new “QuickView” feature puts everything the Help Desk needs to diagnose device or user problems on a single page -- including location maps and even a user’s graphical roaming history.
<i>Google Earth Integration</i>	The 5.0 software integrates with Google Earth, enabling the NOC staff to accurately locate infrastructure devices – even when scattered across an entire city.
<i>Enhanced User Interface</i>	The redesigned 5.0 user interface makes it even easier for your Help Desk staff and others to quickly find the information they need – without having to sort through screens of irrelevant data.